

SNRK Solid Joist Notch Reinforcement Kit

Restore the integrity of solid timber joists where they have been notched to allow electrical and water services to pass through them. The kit includes five brackets and screws - enough to reinforce five floor joists and protect pipes and cables from the risk of damage from subfloor fastenings.

Applications

Features

Commonly the case in bathrooms, notching out solid timber joists allows plumbing pipes and cables to pass through the floor structure, however this can weaken the joist and also lead to a floor more likely to squeak.

The kit includes an engineered steel reinforcement bracket with a bendable tab, so it can easily be installed around existing services and onto the joist to restore strength and stiffness. The top plate covers the notch to ensure that screws used to fix the flooring to the joists will not penetrate pipes or cables beneath. Sufficient for five notched floor joists, the kit includes:

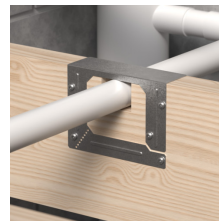
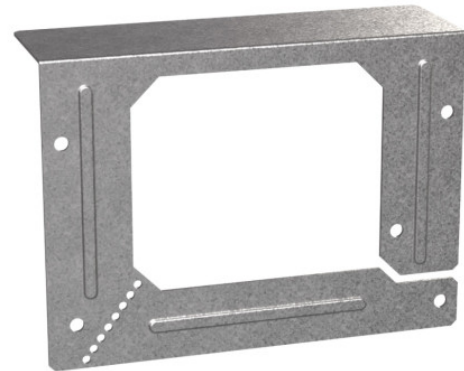
- 5 x **SNRB75** Solid Joist Notch Reinforcement Plates
- 28 x Simpson Strong-Tie 4x30mm screws

Advantages

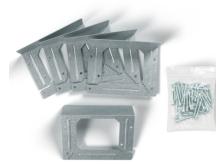
- Reinforces and strengthens solid timber joists with notches to allow services to pass through
- Can be retro-fitted to existing floors or installed to new ones in the same short time frame
- Avoids the risk of flooring fastenings accidentally penetrating pipes or cables
- A convenient solution for up to 5 notched floor joists

Material

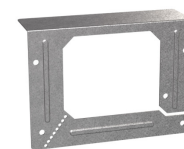
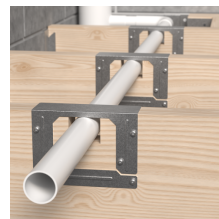
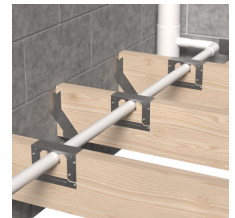
Pre-galvanised mild steel



Reinforces solid joists where notches have been cut into them to allow services to pass through.



SNRK Contains: 5 x SNRB75 brackets and 28 screws.



Solid Joist Notch Reinforcement Bracket

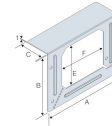
SNRK
Solid Joist Notch Reinforcement Kit

Technical Data

Product
 Dimensions



Reinforces solid joists where notches have been cut into them to allow services to pass through.



*Solid Joist Notch Reinforcement Bracket
 Dimensions*

References	Product Dimensions [mm]				Opening Size [mm]		Fastener Holes	Fasteners	
	A	B	C	t	E	F	Ø5	Qty	Type
SNRK	150	109	45	1.2	76	90	5	5	CSA4.0x30

SNRK Solid Joist Notch Reinforcement Kit

Installation

Install with new, or retrofit to existing floors

Step 1 - Carefully mark out and cut the notch.

Step 2 - Insert the pipework/services as required.

Step 3 - Bend the flexible tab outwards and position the bracket over the in-situ pipework/services centrally over the notch in the timber - the flexible relief tab makes it easy to put into place. The protective plate should cover the top of the notch.

Step 4 - Bend the relief tab inwards against the joist and fasten the bracket into the face of the joist using the screws included in the kit.

Note: fill all 5mm holes with supplied fasteners.



Step 1: Carefully mark and cut out the notch in the joist.



Step 2: Insert the pipework/services as required



Step 3: Position the SNRB bracket with the protective plate covering the top of the notch.



Step 4: Bend the relief tab inwards against the joist and fasten the bracket using 5 screws (included with the kit) into the face of the joist.

