



These post bases are versatile and are commonly used in structural applications.



[UK-DoP-e07/0285](#)
[ETA-07/0285](#)

FEATURES

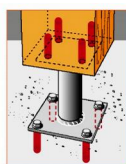
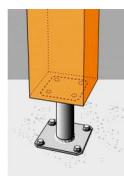
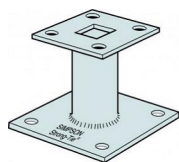


Material

- Steel S235JR according to NF EN 10025.
- Hotdip galvanized according to NF EN ISO 1461.

Benefits

- No machining necessary.



APPLICATIONS

Header member

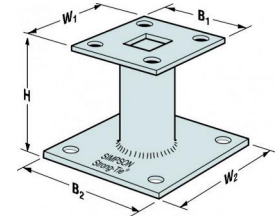
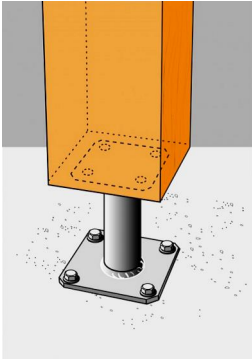
- **Supporting member:** solid wood, glued-laminated wood, concrete.
- **Supported member:** solid wood, composite lumber, glued-laminated wood.

For Use With

- Awning posts.
- Pergola.
- Veranda.

TECHNICAL DATA

Dimensions and characteristic values



References	Dimensions [mm]						Holes [mm]	Characteristic Capacity Download [FR1] [kN]
	A	B	C	D	F	Thickness	Bolts	
PPA100	100	100	100	130	130	4	8 Ø 12	76.1

...

INSTALLATION

Fixing

On post:

- Bolts.
- LAG lag screws 10 x 80 mm.

On concrete:

- Mechanical anchor: WA M10-78/5 pin.
- Chemical anchor: AT-HP resin + LMAS M10-120/25 threaded rod.

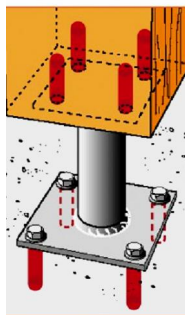
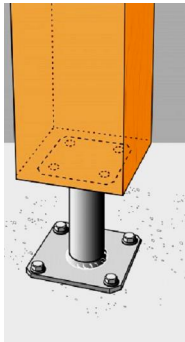
Installation

Partie haute :

1. Placer la platine supérieure du pied de poteau sous le poteau,
1. Fixer cette platine au poteau à l'aide de tirefonds LAG (pré-perçage nécessaire)

Partie basse :

1. Positionner le poteau verticalement dans la structure,
1. Identifier la position des ancrages au sol sur le support,
2. Percer le support verticalement, au diamètre et à la profondeur préconisés pour les fixations choisies,
2. Fixer la platine inférieure au sol à l'aide d'ancrages adaptés.



PPA Installation.

PPA Installation.