



The PISBMAXI is a heavy duty elevated post base to suit various sizes of timber and Glulam posts.



[UK-DoP-e07/0285](#)  
[ETA-07/0285](#)

## FEATURES



### Material

#### Material Grade

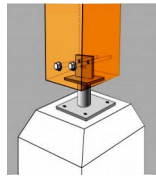
S235

#### Finish

Post hot dip galvanised.

### Benefits

- The post base is made of 15mm thick plates welded to a Ø70mm tube.
- The column is fixed to an 8mm thick vertical plate with holes to suit Ø12mm dowels.



## APPLICATIONS

### Applications

Timber / Glulam columns to solid foundations

### Scope

The PISBMAXI is a heavy duty elevated post base to suit various sizes of timber and Glulam posts.

TECHNICAL DATA

Dimensions

References	Dimensions [mm]										
	A	B	C	D	E	F	G	H	t1	t2	t3
PISBMAXI-K	120	120	148	200	200	200	200	148	8	15	15

Characteristic Capacity

References	Characteristic Capacity [kN]											
	FR1	F2				HR1	HR2					
		115	120	140	160		115	120	140	160	180	200
PISBMAXI-K	233.5	33.5	34.5	38.5	42.1	14.1	7.1	7.6	9.9	12.3	12.4	13.8

*b = Holzbreite [mm]*

*Kombinierte Beanspruchung:*

$$\sum \frac{F_{i,d}}{R_{i,d}} \leq 1$$

## INSTALLATION

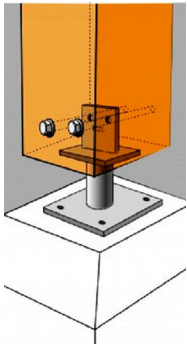
### Installation

The posts must have a slot to suit the vertical metal plate and 2 holes for the Ø12mm dowels.

### Fasteners

Attach the PISBMAXI post base to the concrete foundation using concrete screws / mechanical anchors or chemical anchor system.

Connect to the timber using dowels Ø12 supplied.



Installed  
PISBMAXI