

New



PRODUCT INFORMATION

Hi Vis Softshell Jacket

Description:

High visibility softshell jacket with maximum class 3 protection. This softshell jacket is a modern fit and constructed from a stretchy softshell 3 layer bonded polyester fabric with inner fleece collar and many features.

- ✓ Approved to EN ISO 20471:2013 Class 3
- ✓ Railway Group standard RIS-3279-TOM (Orange Only)
- ✓ Breathable & shower proof: 8000mm/2000mm
- ✓ Under arm eyelet for breathability
- ✓ 2 band & brace & two bands around sleeves
- ✓ High quality retro reflective silver tape
- ✓ Oversized internal phone pocket
- ✓ Zipped side hand pockets
- ✓ Chest pocket with concealed zip
- ✓ Concealed front zip fastening
- ✓ Adjustable rubberized velcro cuffs
- ✓ Modern fitting
- ✓ Shaped dropped hem
- ✓ Draw string hem adjuster

Fabric:

- 100% Polyester

Applications:

Tasks with a high visibility requirement - traffic, security, event marshalling, executives, warehouse duties, driving, rail/underground and roadworks

Colourways:

- HV Yellow
- HV Orange

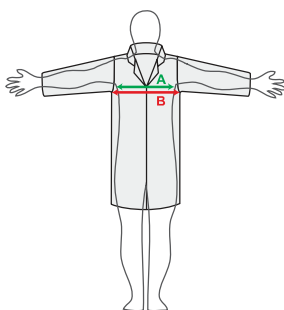
Product Codes:

36S41-7	S - 4XL	Hi Vis Softshell Jacket - HV Yellow
36S81-7	S - 4XL	Hi Vis Softshell Jacket - HV Orange

Standards: EN ISO 20471 RIS-3279-TOM



EC council directive 89/686/EEC
EN ISO 20471 Class 3
RIS-3279-TOM (Orange Only)



Size Chart:

Measurements in cm	S	M	L	XL	2XL	3XL	4XL
To fit (A)	106-112	112-118	118 -124	124-130	130-136	136-142	142-148

Issue No: 4

Issue Date: 14/12/2017

Packaging: 1 piece per bag - 20 bags per case

Outer Carton Artwork:



Inner Artwork:



Feature Symbols:



Product can be washed 25 times



Product features a internal phone pocket

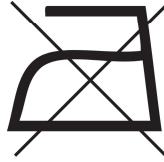
Washcare Symbols:



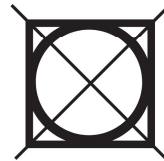
Wash cycle at 30°



Do not bleach



Do not iron



Do not tumble dry



Do not dry clean

The information shown on this specification sheet is intended as a guide and is advisory only. All details were correct at the time of issue. As conditions of use are ultimately beyond our control, we advise that the product is tested for the particular application before use.