



CBH is a discreet connector used for fastening on wood or a rigid substrate.



[UK-DoP-e07/0245](#)  
[ETA-07/0245](#)

## FEATURES



### Material

- Galvanized steel S250GD + Z275 according to NF EN 10346.

### Benefits

- Concealed assembly.
- Fastening on wood or concrete.
- Optimised installation compliant with Eurocodes.

## APPLICATIONS

### Header member

- Supporting member:** solid wood, composite lumber, glued-laminated wood, concrete.
- Supported member:** solid wood, composite lumber, glued-laminated wood.

### For Use With

- Joists.
- Purlins.
- Structural beams.

TECHNICAL DATA

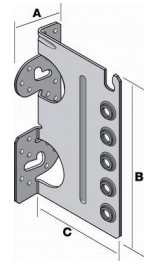
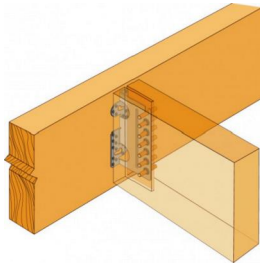
Dimensions

References	Dimensions [mm]				Fixing				
	A	B	C	Thickness	Header		Joist		
					Wood Support		Dowels		
					Qty	Type	Qty	Diameter	Type
CBH150/2,5	60	150	113,5	2,5	14	CNA4,0x60	5	10	STD10
CBH180/2,5	60	180	113,5	2,5	16	CNA4,0x60	6	10	STD10
CBH220/2,5	60	220	113,5	2,5	22	CNA4,0x60	7	10	STD10

Wood cross-sections

References	Joist				
	Width [mm]		Height [mm]		
	Min.	Max	Min. Slope=0	Min. Slope#0	Max
CBH150/2,5	60	160	190	219	225
CBH180/2,5	60	160	220	249	270
CBH220/2,5	60	160	250	279	330

Wood/wood fastening- Characteristic values in kn



References	Slope #S = 0°						Slope #S = 15°						Slope #S = 30°						Slope #S = 45°					
	Dowel Embedment Length [mm]						Dowel Embedment Length [mm]						Dowel Embedment Length [mm]						Dowel Embedment Length [mm]					
	60	80	100	120	140	160	60	80	100	120	140	160	60	80	100	120	140	160	60	80	100	120	140	160
CBH150/2,5	18	18.6	20.7	22.4	24	24	17.3	17.9	19.6	21.2	22.9	23.3	16.7	17.2	18.7	20.1	21.6	22.5	16.4	16.7	18	19.3	20.6	21.9
CBH180/2,5	25	26.5	29.5	32.1	32.6	32.6	24	25.2	28	30.5	31.8	31.8	23.1	24.1	26.6	28.8	30.8	30.8	22.5	23.4	25.6	27.6	29.7	30.1
CBH220/2,5	32.6	34.2	37.9	41.1	42.8	42.8	31.4	32.7	36	38.9	41.6	41.6	30.4	31.5	34.3	37	39.7	40.4	29.8	30.8	33.3	35.7	38.3	39.5

## INSTALLATION

### Fixing

#### **Wood/Wood:**

##### **Supporting member:**

- CNA annular ring-shank nails dia. 4.0 x 60 mm compliant with ETA-04/0013.

##### **Supported member:**

- Dowels dia. 10 mm (length to be specified depending on wood thickness).

#### **Wood/Rigid substrate:**

##### **Concrete supporting member:**

- Mechanical anchor dia. 10 mm (dia. 8 and dia. 10 for CBH150):  
CBH150/2.5: WA M8-68/5 or WA M10 78/5.  
CBH180/2.5: WA M10-78/5.  
CBH220/2.5: WA M10-78/5.
- Chemical anchor: AT-HP resin + LMAS M8-110 or LMAS M10-130 threaded rod.

##### **Steel supporting member:**

- Dowel dia. 10 mm (dia. 8 and dia. 10 for CBH150).

##### **Supported member:**

- Dowels dia. 10 mm (length to be specified depending on wood thickness - Ref. STD10/X).

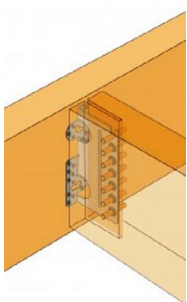
### Installation

#### • **Pocket:**

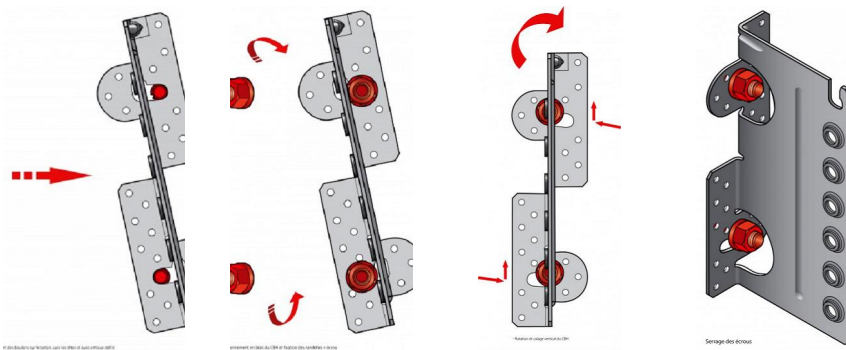
Make a vertical pocket in the middle of the supported member 9 mm thick.

#### • **Spot facing:**

Not required, but spot facing enhances the appearance of the assembly. Depth 5 mm.



Wood to wood  
connection.



Position 1

Position 2

Position 3

Position 4

## TECHNICAL NOTES

[CBH - distance entre les broches.pdf](#)